

Is Your Product Registered?

Contact your Dealer to verify.

Warranties are based on Registrations and reduced to 1 year without  
Registration.

# PARTS LIST

MM300

## CONTENTS

1. MAIN BODY .....	1 ~ 4
2. ENGINE (CYLINDER, CRANKCASE) .....	5 ~ 8
3. ENGINE (CARBURETOR, FUEL TANK).....	9 ~ 12
4. ACCESSORIES .....	13 ~ 14

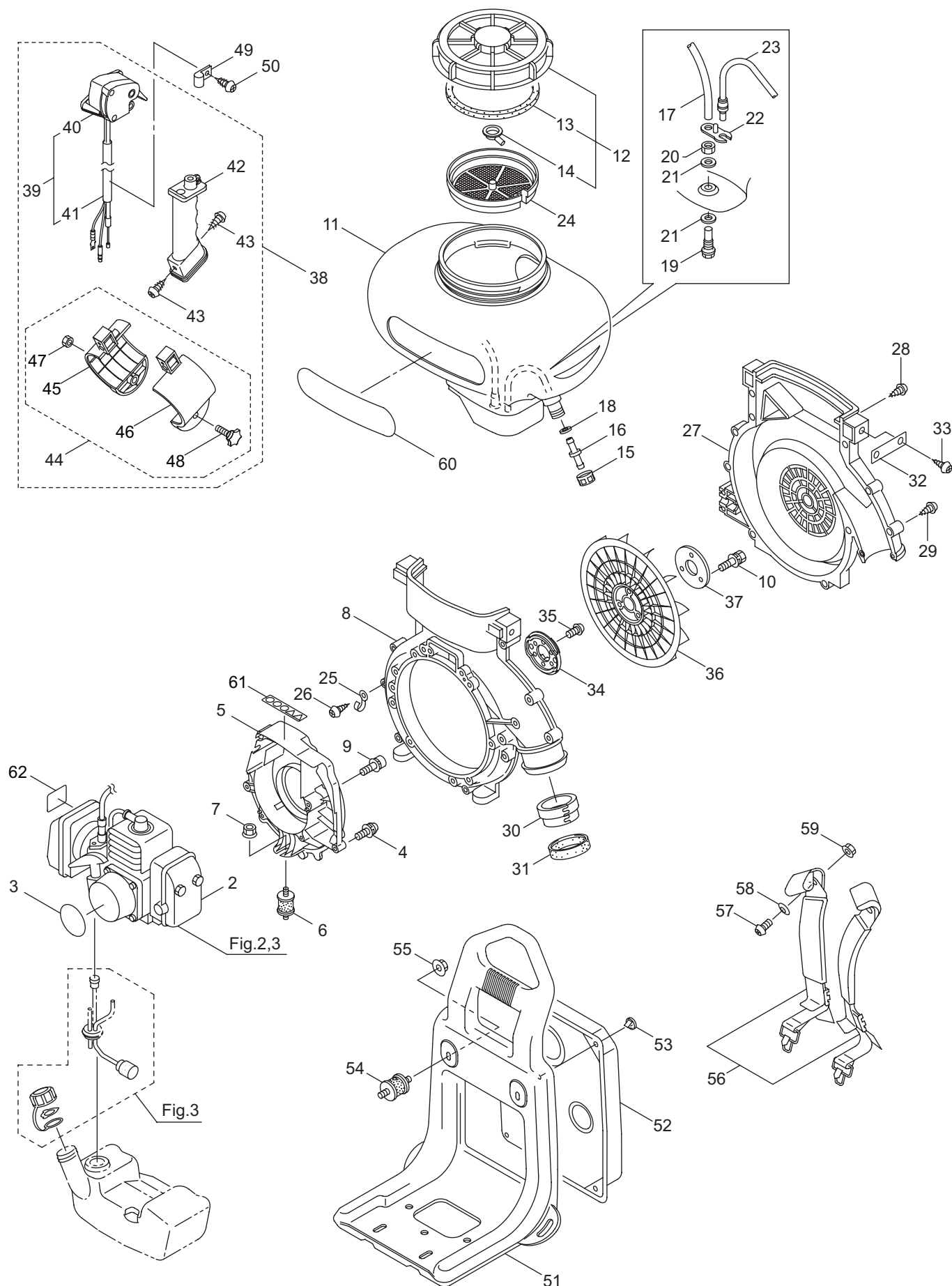
2015. 02.



**MARUYAMA**

P/N 523993

# 1. MM300 MAIN BODY



Ref. No.	Part No.	Part Name	Q'ty	Remarks
1-1	352799	MM300	1	
1-2	859719	Engine	1	CE300D/04
1-3	275105	Label	1	MM300
1-4	092005	Screw	5	5x15
1-5	130895	Flange	1	
1-6	101877	Buffer	1	
1-7	100234	Nut	1	M6
1-8	275109	Fan Case (Engine Side)	1	
1-9	125420	Cap Screw	4	M5x35
1-10	127528	Bolt	3	M6x30
1-11	118817	Chemical Tank	1	13L
1-12	091486	Cap, Chemical Tank	1	Incl,13,14
1-13	022362	Packing	1	
1-14	022363	Inner Cap	1	
1-15	022408	Cap, Hose Joint	1	
1-16	022409	Hose Joint	1	
1-17	100622	Rubber Tube	1	7x11x380L
1-18	028885	Packing	1	13x26xt2
1-19	107303	Joint Pipe	1	
1-20	101063	Joint Nut	1	
1-21	101062	Packing	2	16.5x27xt2.5
1-22	025863	Pipe Holder	1	
1-23	107237	Rubber Tube	1	
1-24	022410	Strainer	1	
1-25	109051	Clamp	1	
1-26	089806	Screw	1	M5x10
1-27	118521	Fan Case (Frame Side)	1	
1-28	128196	Tapping Screw	2	M5x14
1-29	130420	Tapping Screw	10	M5x25
1-30	118561	Collar	1	
1-31	118562	Band	1	
1-32	120320	Plate	2	
1-33	089826	Screw	4	M6x15
1-34	130053	Adapter	1	
1-35	130245	Bolt	3	M6x15
1-36	110466	Fan	1	
1-37	118248	Plate	1	
1-38	275147	Throttle Ass'y	1	Incl.39-48
1-39	275148	Throttle Lever Ass'y	1	Incl.40,41
1-40	125756	Throttle	1	
1-41	275149	Throttle Wire Ass'y	1	
1-42	118811	Grip	1	
1-43	127297	Screw	2	M5x20
1-44	125184	Band Ass'y	1	Incl.45-48
1-45	123132	Holder, (A)	1	

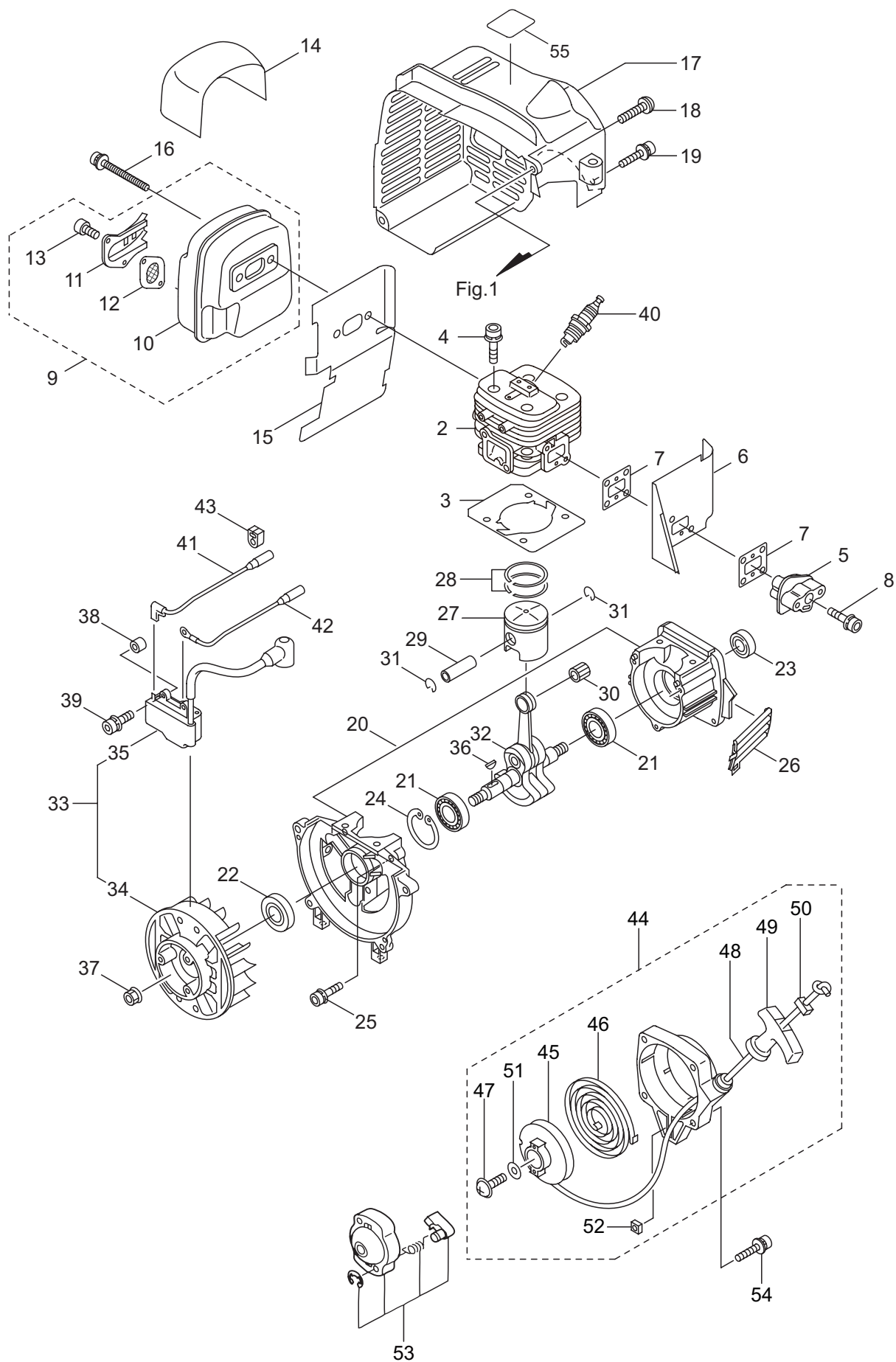
This exploded view diagram illustrates the assembly of a portable engine-driven pump. The components are numbered as follows:

- Engine and Fuel System (Fig. 2, 3):** Includes the engine (2), fuel tank (3), fuel filter (6), fuel line (7), and carburetor (8).
- Pump and Discharge Assembly (Fig. 4):** Features the pump housing (9), impeller (10), discharge pipe (11), and various seals and gaskets (12, 13, 14, 15, 16, 17, 18, 19, 20, 21, 22, 23, 24, 25, 26, 27, 28, 29, 30, 31, 32, 33, 34, 35, 36, 37, 38, 39, 40, 41, 42, 43, 44, 45, 46, 47, 48, 49, 50).
- Structural Components (Fig. 5):** Includes the main frame (51), handle (52), and various mounting brackets and fasteners (53, 54, 55, 56, 57, 58, 59, 60, 61, 62).

The diagram shows the relative positions and assembly sequence of these parts, with dashed lines indicating the path of assembly.

Ref. No.	Part No.	Part Name	Q'ty	Remarks
1-46	123134	Holder, (B)	1	
1-47	127298	Nut	1	M6
1-48	127299	Knob Bolt	1	M6x30
1-49	126049	Clamp	1	
1-50	127300	Screw	1	M5x18
1-51	110509	Backpack Frame	1	
1-52	130221	Cushion Pad	1	
1-53	100749	Fastener	4	#7
1-54	026223	Buffer	2	30-M6x14
1-55	127228	Nut	3	M6
1-56	127089	Shoulder Strap Ass'y	1	
1-57	123370	Screw	2	M6x20
1-58	127224	Washer	2	6x23xt1.6
1-59	127237	Nut	2	M6
1-60	275104	Label	1	MM300
1-61	132090	Label	1	
1-62	125747	Label	1	

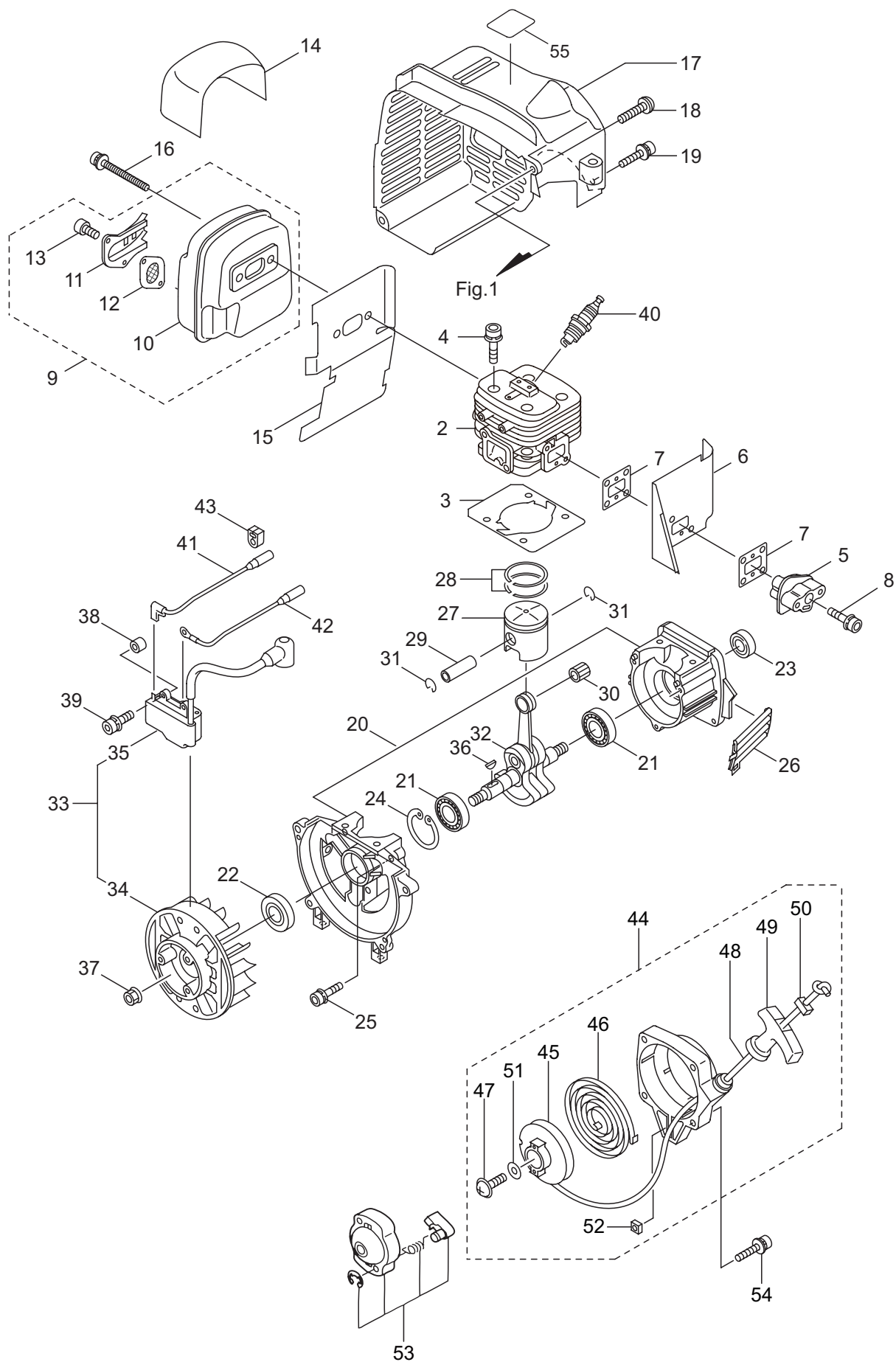
## 2. MM300 ENGINE (CYLINDER, CRANKCASE)



Ref. No.	Part No.	Part Name	Q'ty	Remarks
2-1	859719	Engine	1	CE300D/04
2-2	286791	Cylinder	1	
2-3	286846	Gasket	1	
2-4	261250	Cap Screw	4	M5x20
2-5	282579	Insulator	1	
2-6	281590	Air Duct	1	
2-7	261171	Gasket	2	
2-8	265924	Cap Screw	2	M5x25
2-9	275189	Maffler Ass'y	1	Incl.10-13
2-10	288180	Muffler Comp	1	
2-11	268171	Muffler Tail	1	
2-12	267056	Spark Arrester	1	
2-13	265107	Cap Screw	2	M4x10
2-14	268461	Holder	1	
2-15	281589	Gasket	1	
2-16	266402	Cap Screw	2	M5x55
2-17	289293	Top Cover	1	
2-18	122095	Screw	2	M5x20
2-19	265724	Cap Screw	2	M4x25
2-20	286851	Crankcase	1	
2-21	280488	Bearing	2	PPL 6001
2-22	261492	Oil Seal	1	ISCD12287
2-23	261386	Oil Seal	1	ISCD12227
2-24	055185	Snap Ring	1	#28
2-25	261612	Cap Screw	3	M5x30
2-26	281442	Screen	1	
2-27	283380	Piston	1	
2-28	265067	Piston Ring	2	(2)Required
2-29	265068	Piston Pin	1	
2-30	265225	Bearing,Needle	1	
2-31	261393	Clip,Piston Pin	2	
2-32	265141	Crankshaft/Conn.Rod Ass'y	1	
2-33	287004	Magneto Ass'y	1	Incl.34,35
2-34	286889	Rotor/Fan	1	
2-35	282010	Ignition Coil Ass'y	1	
2-36	261076	Woodruff Key	1	3x10
2-37	261417	Nut,Rotor	1	M8
2-38	280381	Spacer	2	
2-39	261256	Cap Screw	2	M4x25
2-40	285982	Spark Plug	1	NGK BPM8Y
2-41	281864	Lead	1	
2-42	282087	Lead	1	
2-43	281172	Grommet	1	
2-44	282757	Starter Ass'y	1	Incl.45-52
2-45	280492	Reel	1	

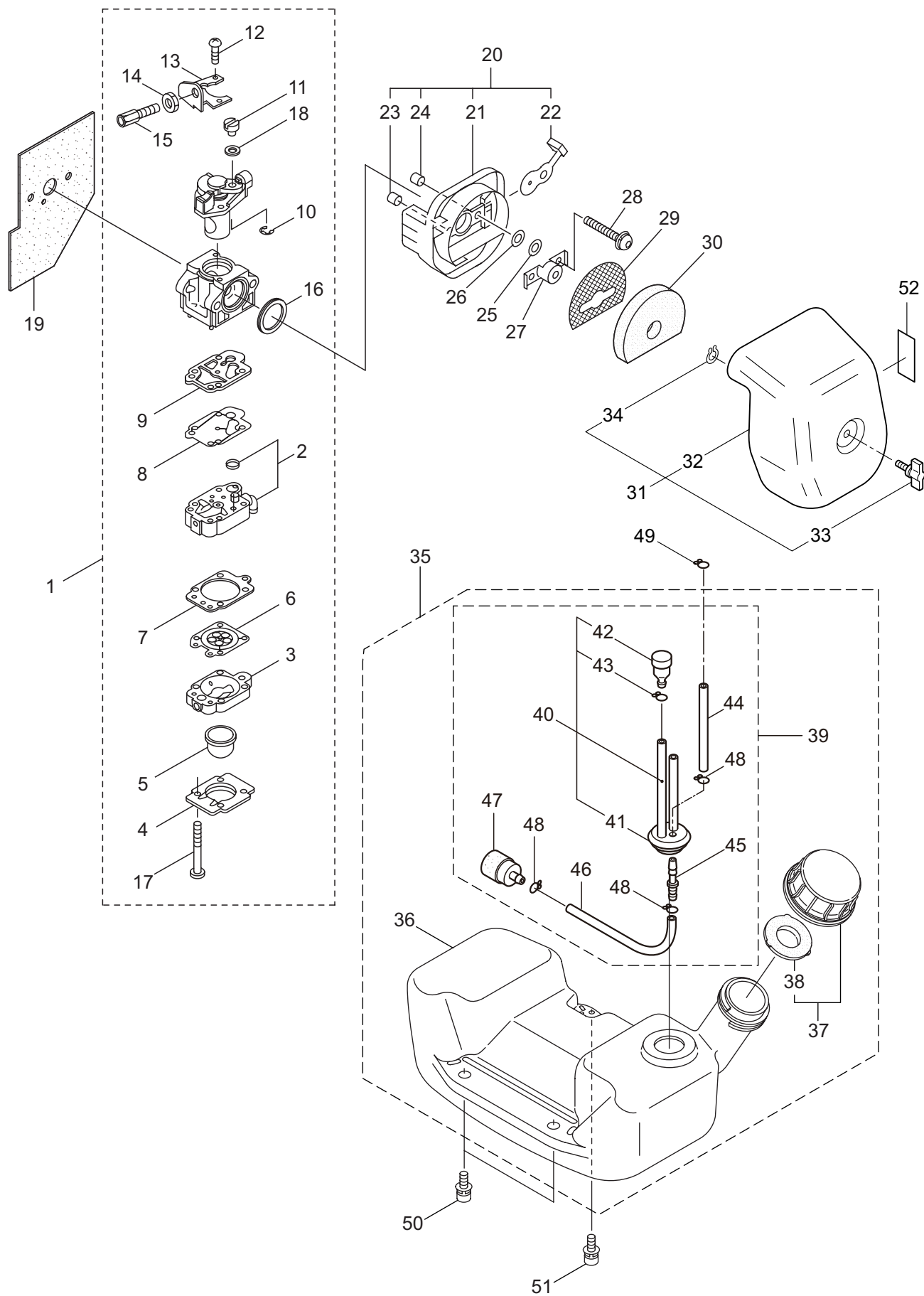


## 2. MM300 ENGINE (CYLINDER, CRANKCASE)



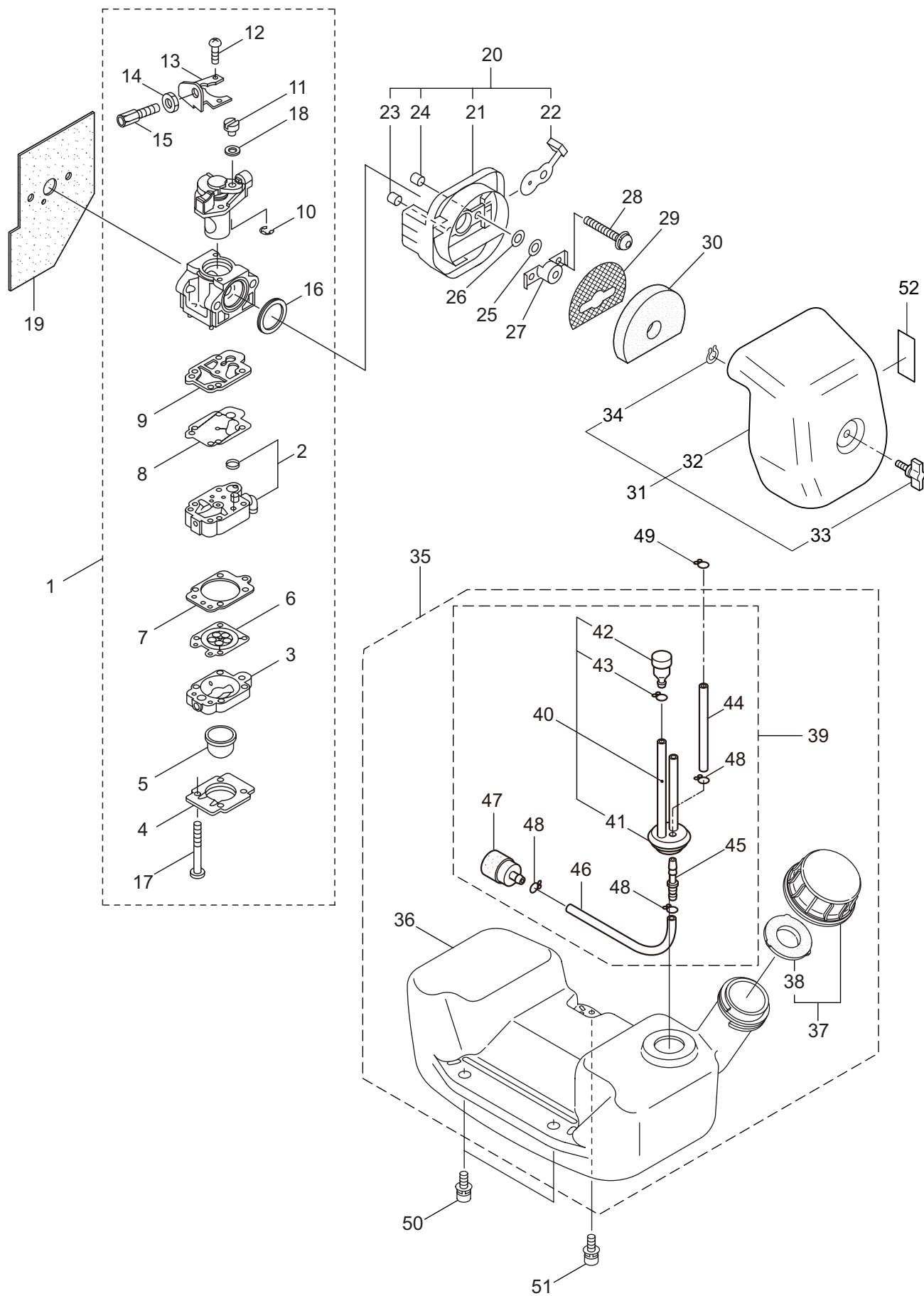
Ref. No.	Part No.	Part Name	Q'ty	Remarks
2-46	287421	Spiral Spring	1	M4x25
2-47	280494	Screw	1	
2-48	283616	Starter Rope	1	
2-49	282186	Starter Grip	1	
2-50	282187	Stopper	1	
2-51	280547	Washer	1	
2-52	269423	Nut	1	
2-53	269492	Starter Pulley Ass'y	1	
2-54	265724	Cap Screw	2	
2-55	285188	Label	1	

### 3. MM300 ENGINE (CARBURETOR, FUEL TANK)



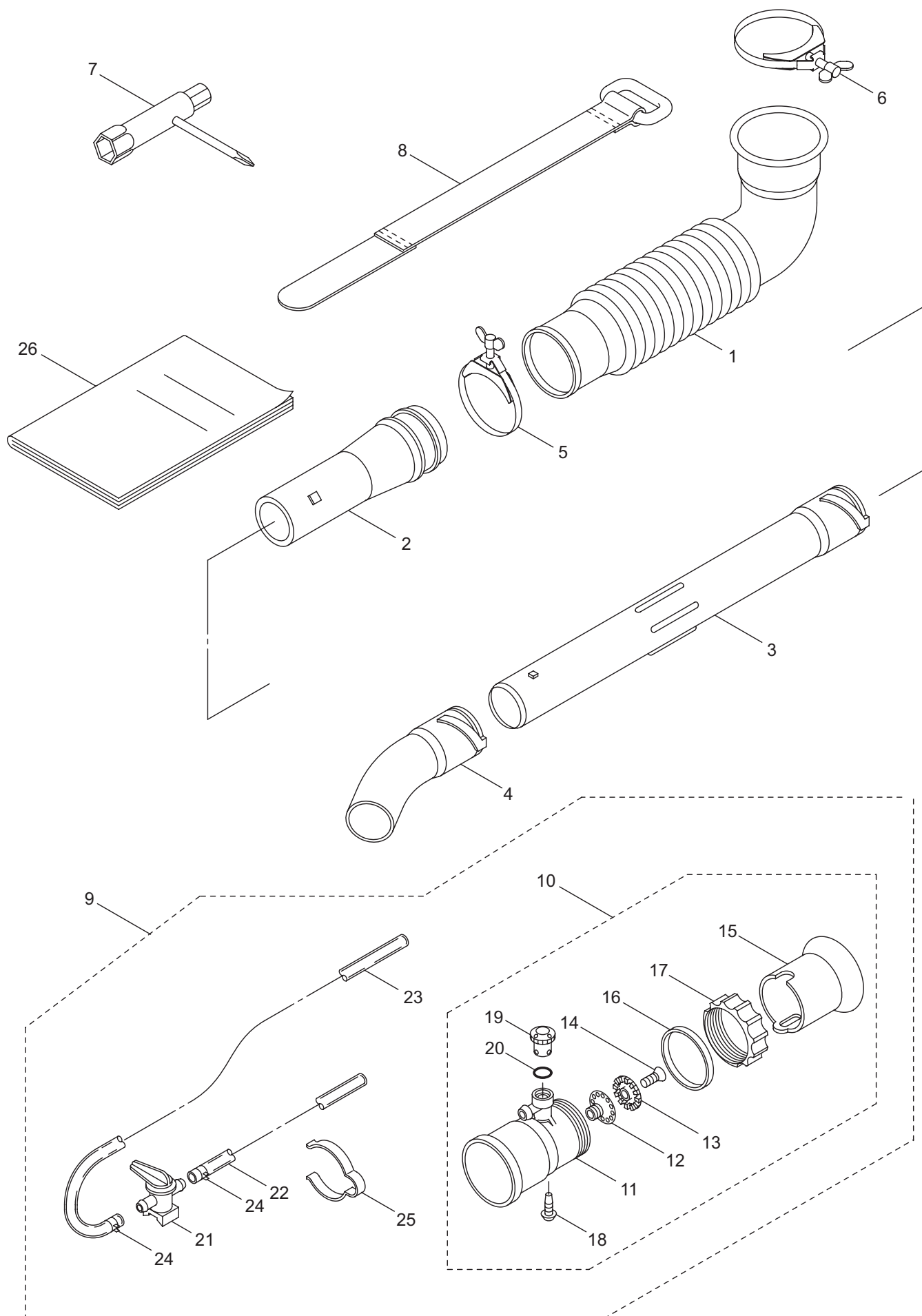
Ref. No.	Part No.	Part Name	Q'ty	Remarks
3-1	288263	Carburetor Ass'y	1	Incl.2-18 New gasket required
3-2	264155	Pump Body	1	
3-3	262991	Purge Body	1	
3-4	262992	Cover Plate	1	
3-5	261874	Primer Bulb	1	
3-6	283905	Diaphragm, Meterring	1	
3-7	262993	Gasket	1	
3-8	262994	Diaphragm,Fuel Pump	1	
3-9	282576	Gasket	1	
3-10	261876	E-Ring	1	
3-11	261658	Swivel	1	
3-12	261875	Screw	2	
3-13	264677	Bracket	1	
3-14	261878	Nut	1	
3-15	261877	Adapter	1	
3-16	261657	Packing	1	
3-17	262996	Screw	4	
3-18	264678	Washer	1	
3-19	282578	Gasket	1	
3-20	268055	Air Filter Case Ass'y	1	Incl.21-24
3-21	268056	Air Filter Case	1	
3-22	268057	Valve	1	
3-23	268157	Sleeve	1	5.5x7.1x6L
3-24	268412	Sleeve	1	5.5x7.1x6.4L
3-25	263345	Packing	1	7.2x11xt1.3
3-26	263942	Washer	1	7.2x12xt0.15
3-27	263815	Stay	1	
3-28	264016	Cap Screw	2	M5x60
3-29	265026	Screen	1	
3-30	281861	Element	1	
3-31	268058	Air Filter Cover Ass'y	1	Incl.32-34
3-32	268059	Air Filter Cover	1	
3-33	281438	Knob	1	
3-34	261734	Snap Ring	1	#5
3-35	289038	Fuel Tank Ass'y	1	Incl.36-48
3-36	283891	Fuel Tank	1	
3-37	289043	Fuel Tank Cap Ass'y	1	Incl.38
3-38	287058	Gasket	1	
3-39	289035	Fuel Pipe Pick-up Ass'y	1	Incl.40-48
3-40	289036	Fuel Pipe Ass'y	1	Incl.41-43
3-41	268065	Grommet	1	
3-42	261590	Breather	1	
3-43	261117	Clip	1	
3-44	289028	Pipe A	1	3x5x53L
3-45	288921	Joint	1	

### 3. MM300 ENGINE (CARBURETOR, FUEL TANK)



Ref. No.	Part No.	Part Name	Q'ty	Remarks
3-46	289033	Pipe	1	3x5x100L
3-47	264653	Filter Ass'y	1	
3-48	261117	Clip	3	
3-49	261117	Clip	1	
3-50	268940	Screw	2	M5x18
3-51	281715	Cap Screw	1	M5x20
3-52	261352	Label	1	Choke

## 4. MM300 ACCESSORIES



Ref. No.	Part No.	Part Name	Q'ty	Remarks
4-1	118400	Flexible Pipe	1	
4-2	106721	Swivel Pipe	1	
4-3	107149	Straight Pipe	1	600L
4-4	106725	Bent Pipe	1	
4-5	128305	Clamp Ass'y	1	#78
4-6	128188	Clamp Ass'y	1	#85
4-7	127099	Box Spanner	1	
4-8	127720	Band	1	
4-9	275106	Mist Attachment	1	Incl.10-25
4-10	024412	Mist Nozzle Ass'y	1	Incl.11-20
4-11	029749	Mist Nozzle	1	
4-12	024801	Nozzle Tip	1	
4-13	024802	Nozzle Cap	1	
4-14	087499	Screw	1	M3x12
4-15	024803	Collar, Nozzle Head	1	
4-16	024800	Clamp Ring	1	
4-17	024804	Nut	1	M60x1.5
4-18	024811	Stopper	1	
4-19	024805	Cock	1	
4-20	011345	O-Ring	1	P12
4-21	101872	Mist Cock Ass'y	1	Incl.14
4-22	118975	Vinyl Pipe	1	9x12x1050L
4-23	024410	Vinyl Pipe	1	9x12x700L
4-24	043972	Hose Band	2	
4-25	024421	Stop Ring	2	
4-26	275107	Instruction Manual	1	MM300